

大腸直腸外科手術

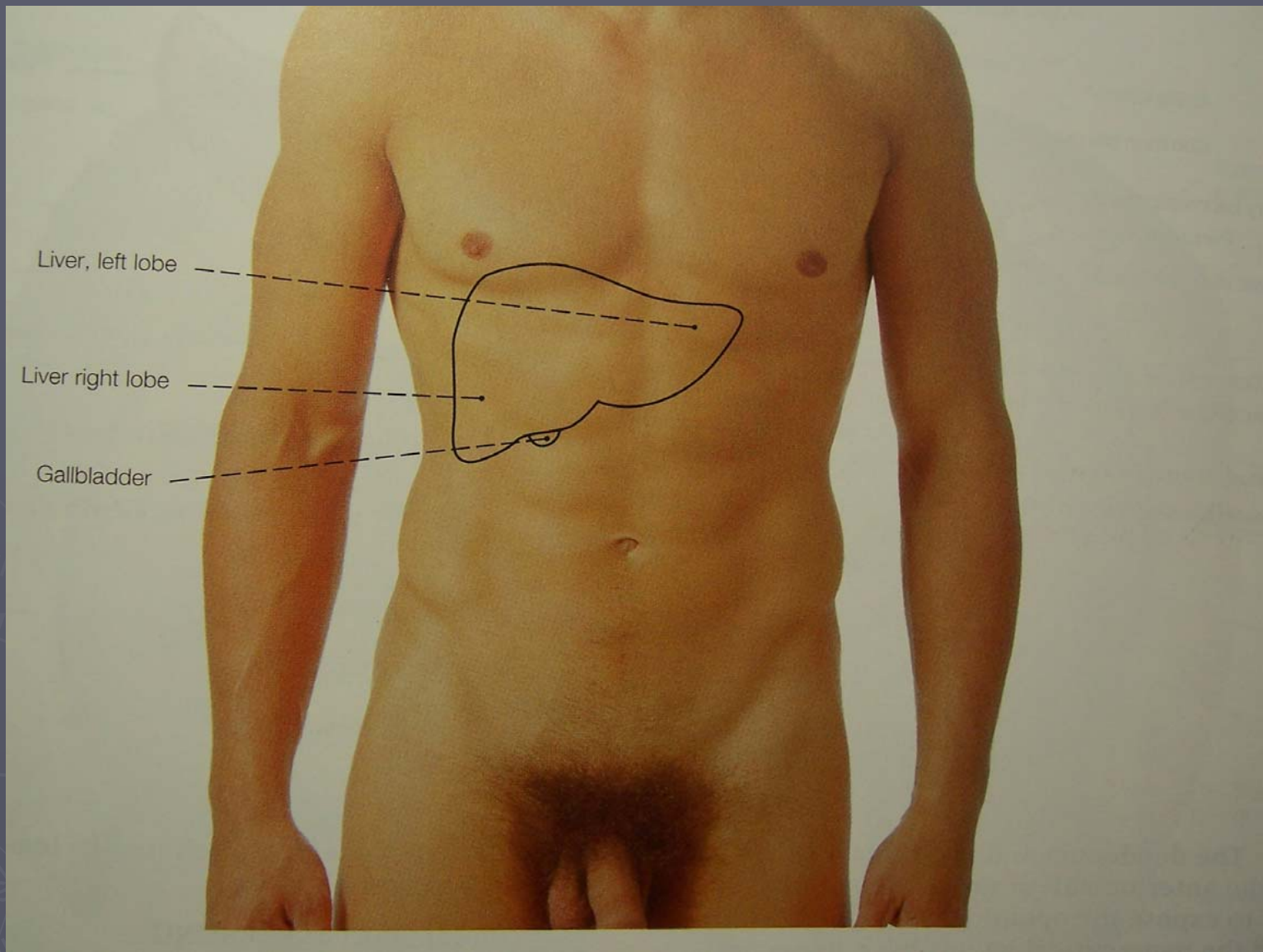
GS 徐大聞

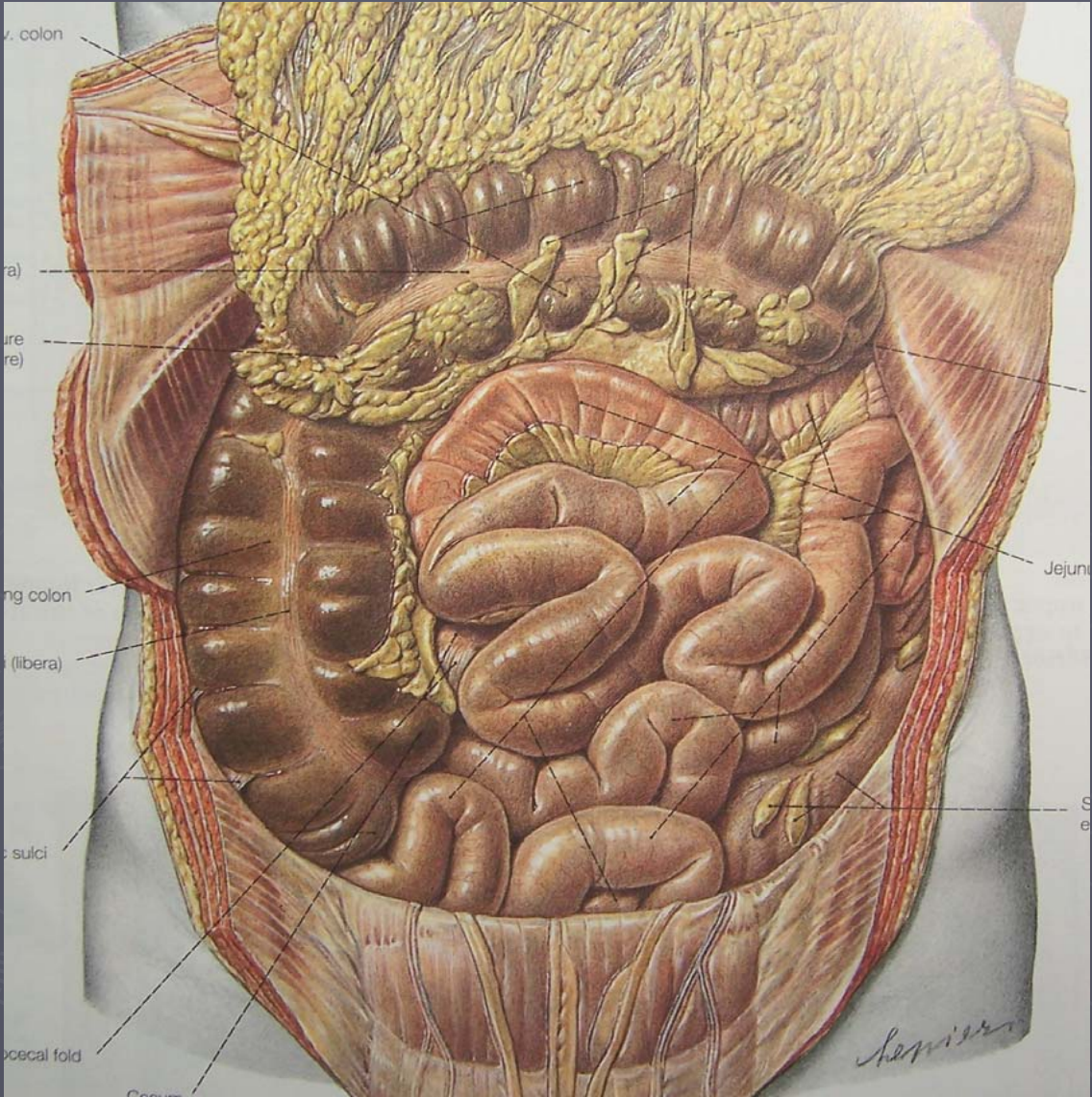
內容簡介

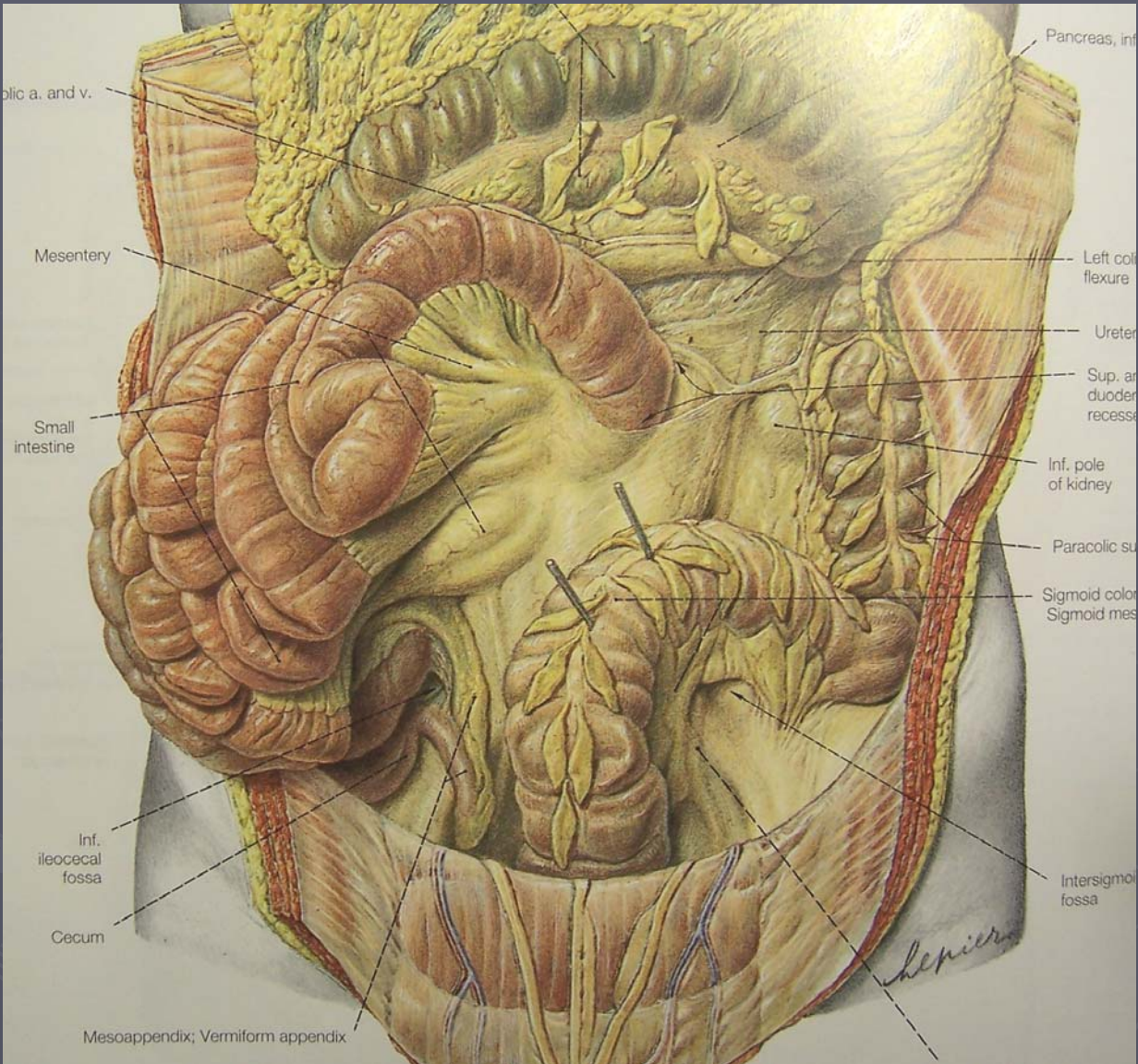
- ▶ 解剖構造
- ▶ 手術分類
- ▶ 手術方法及可能的併發症

大腸直腸的解剖構造

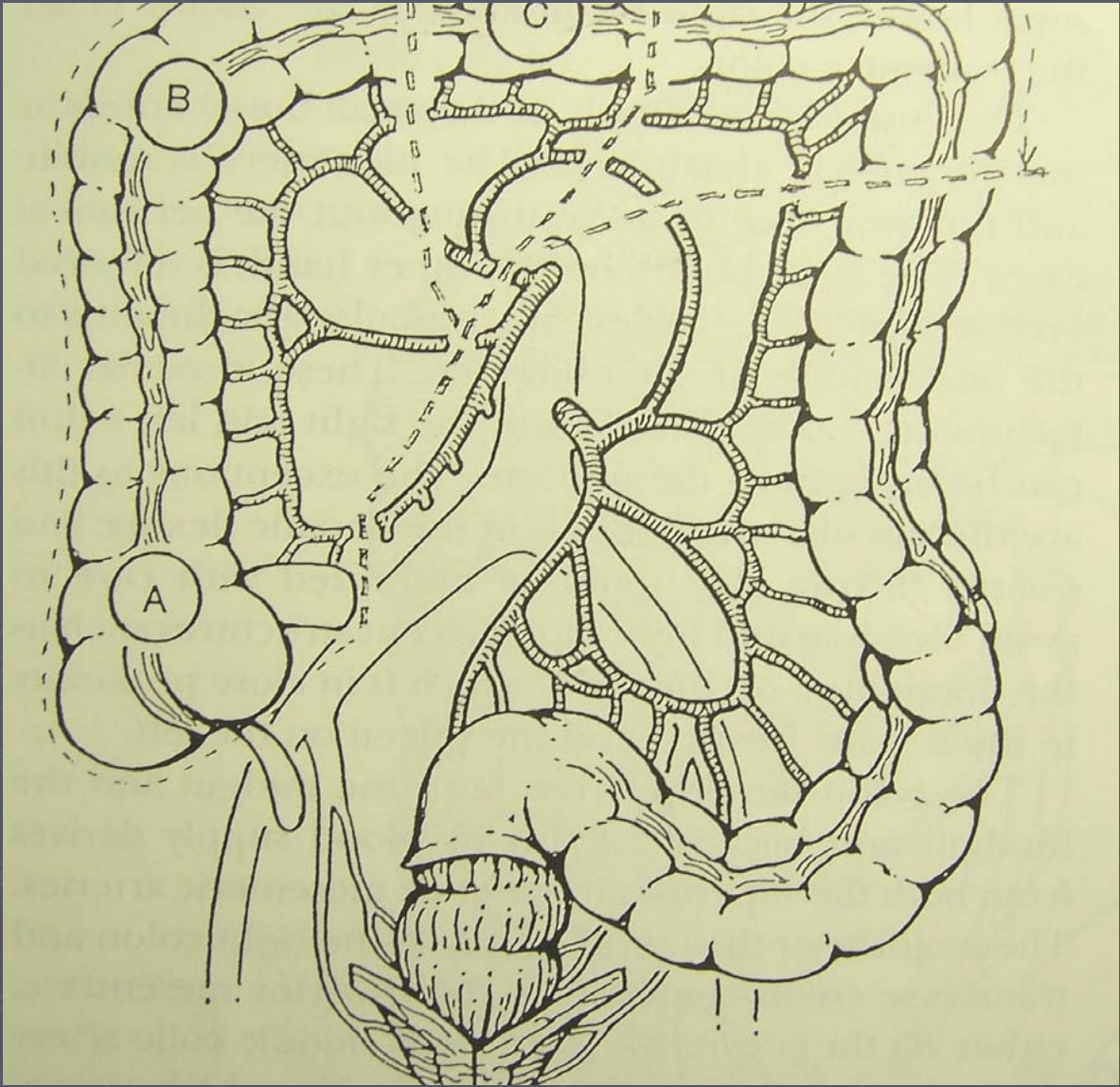


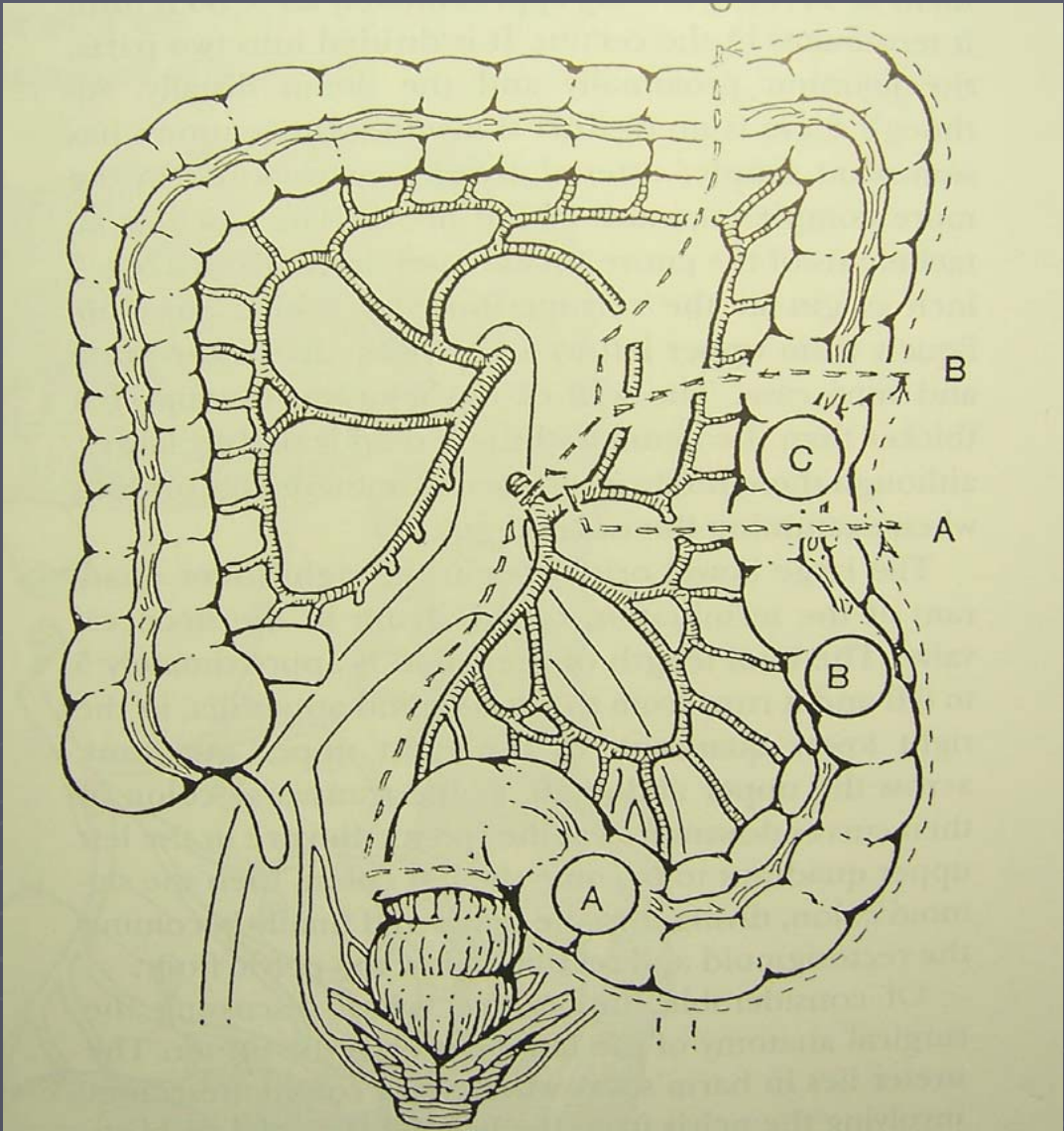












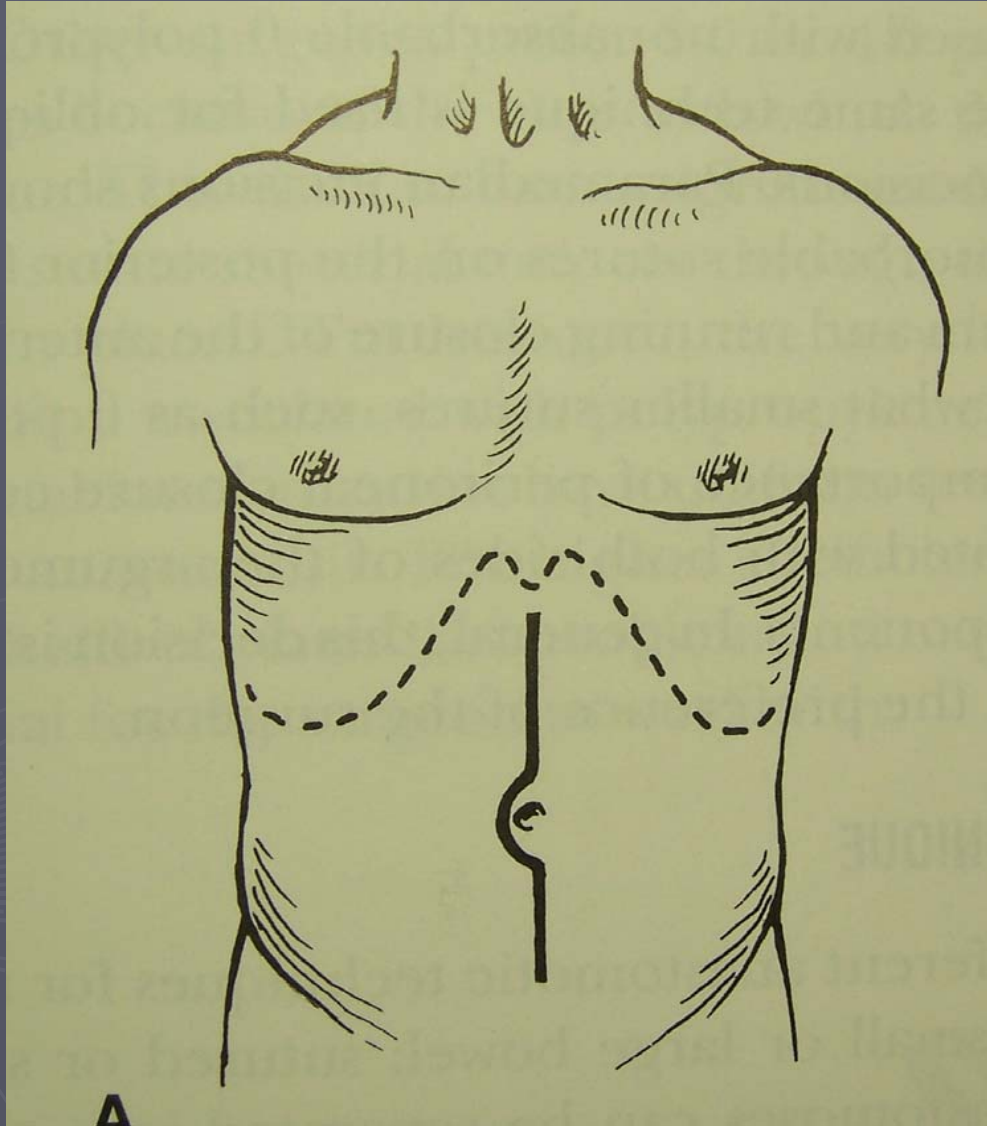
手術分類

以傷口分類

剖腹手術

腹腔鏡手術

經肛門手術



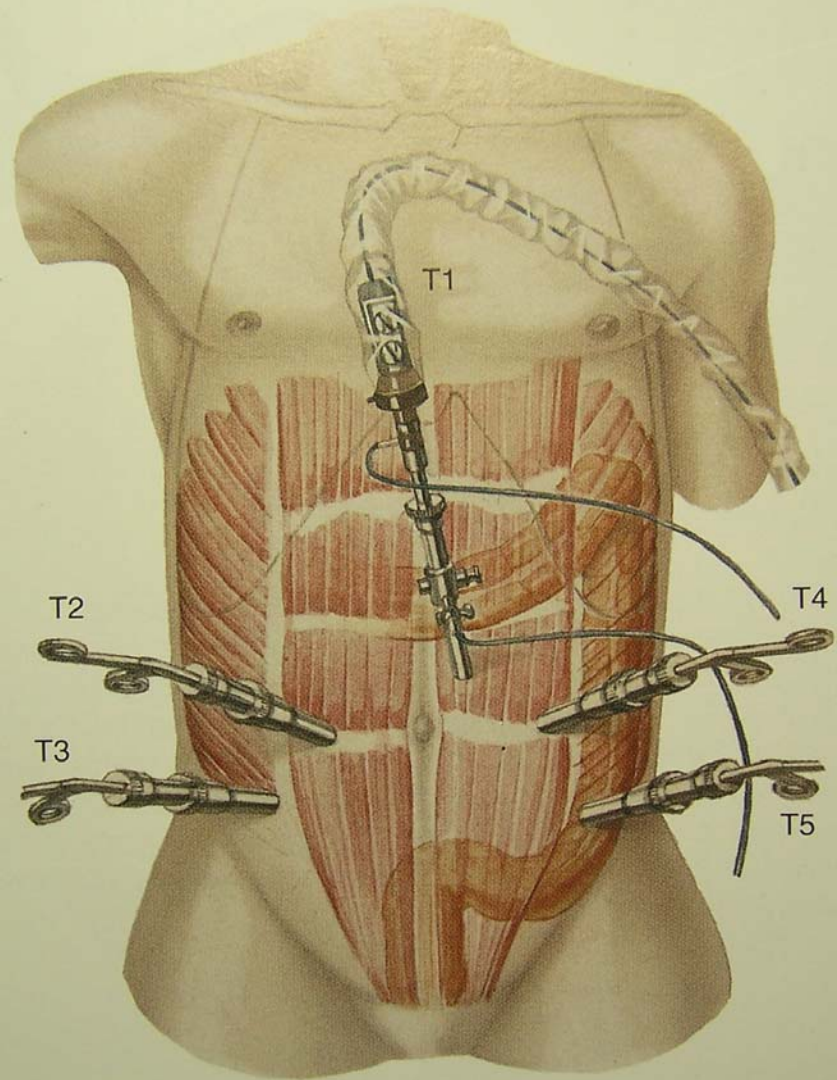
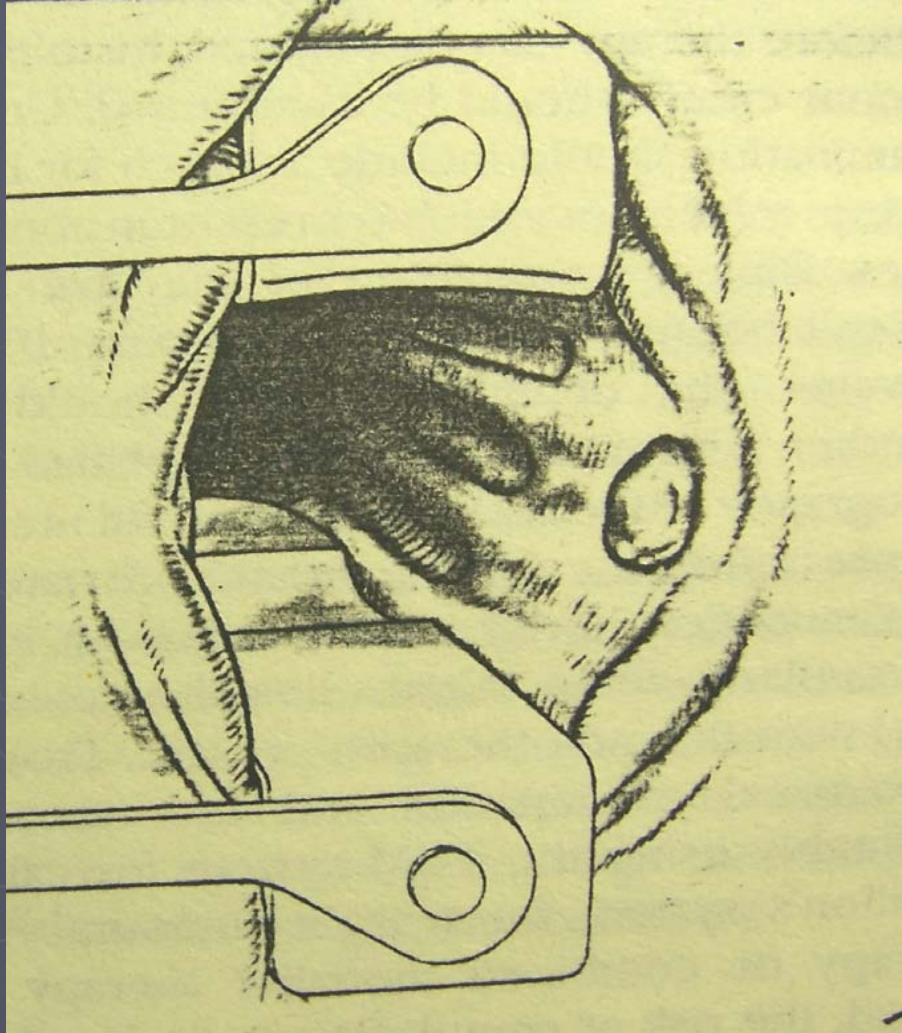


Fig. 11.3.3 Resection of sigmoid colon. Trocar placement.



以目的分類

- ▶ 局部切除手術(local excision)
- ▶ 根治手術(right hemicolectomy, left hemicolectomy, LAR, APR)
- ▶ 姑息手術(colostomy, bypass operation)
- ▶ 分流手術(ileostomy, colostomy)
- ▶ 切除及重建手術(ileal pouch, pull through operation)

手術品質

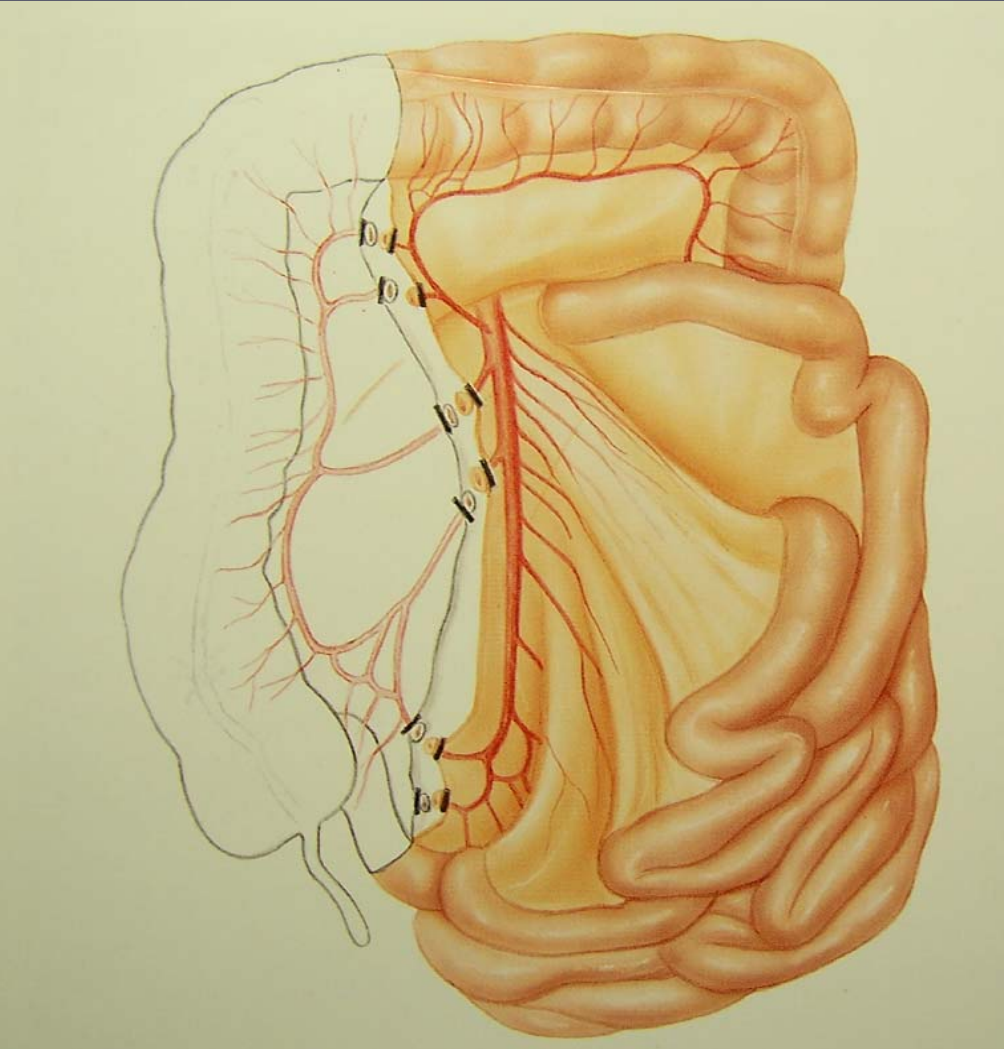
- ▶ Good colon prepare
- ▶ 健康的腸段
- ▶ 血流供應
- ▶ 無張力吻合
- ▶ 最少的破壞

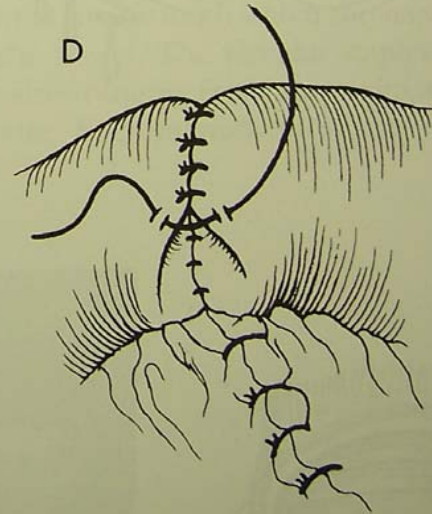
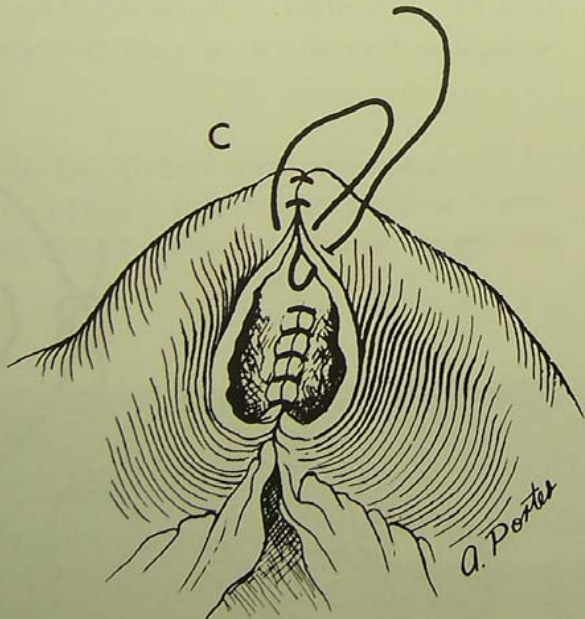
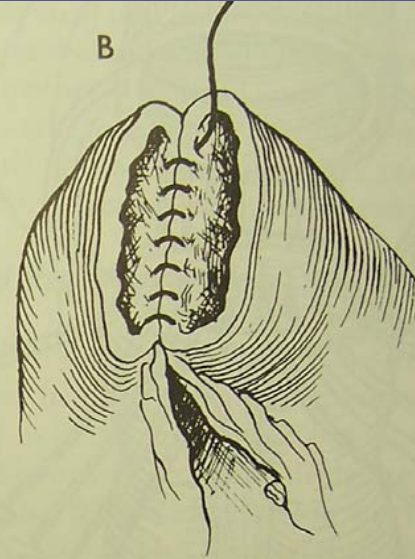
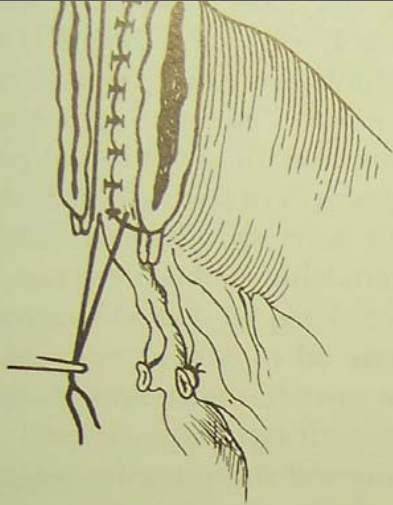
手術簡介



Right hemicolectomy

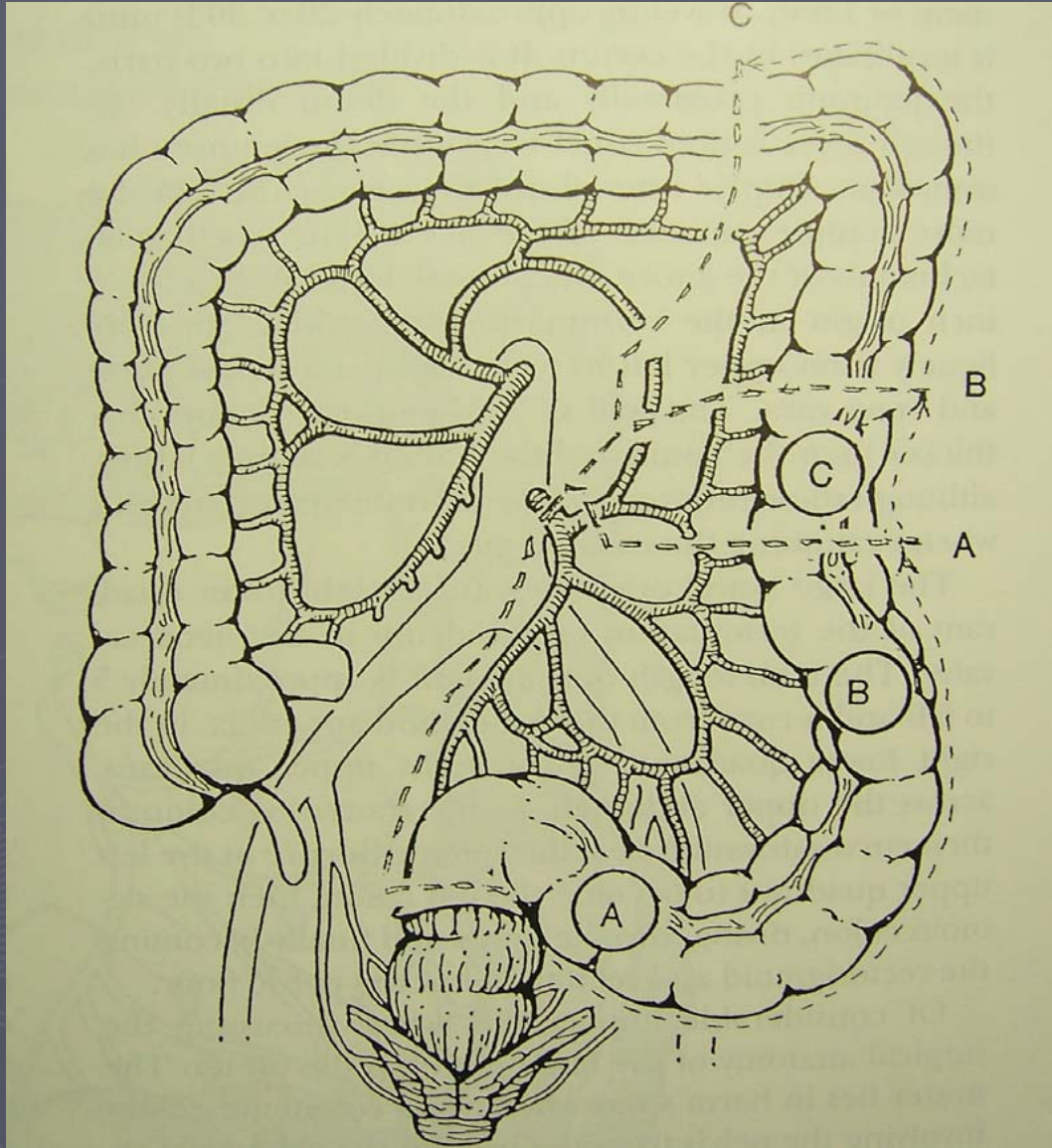
右半結腸切除術





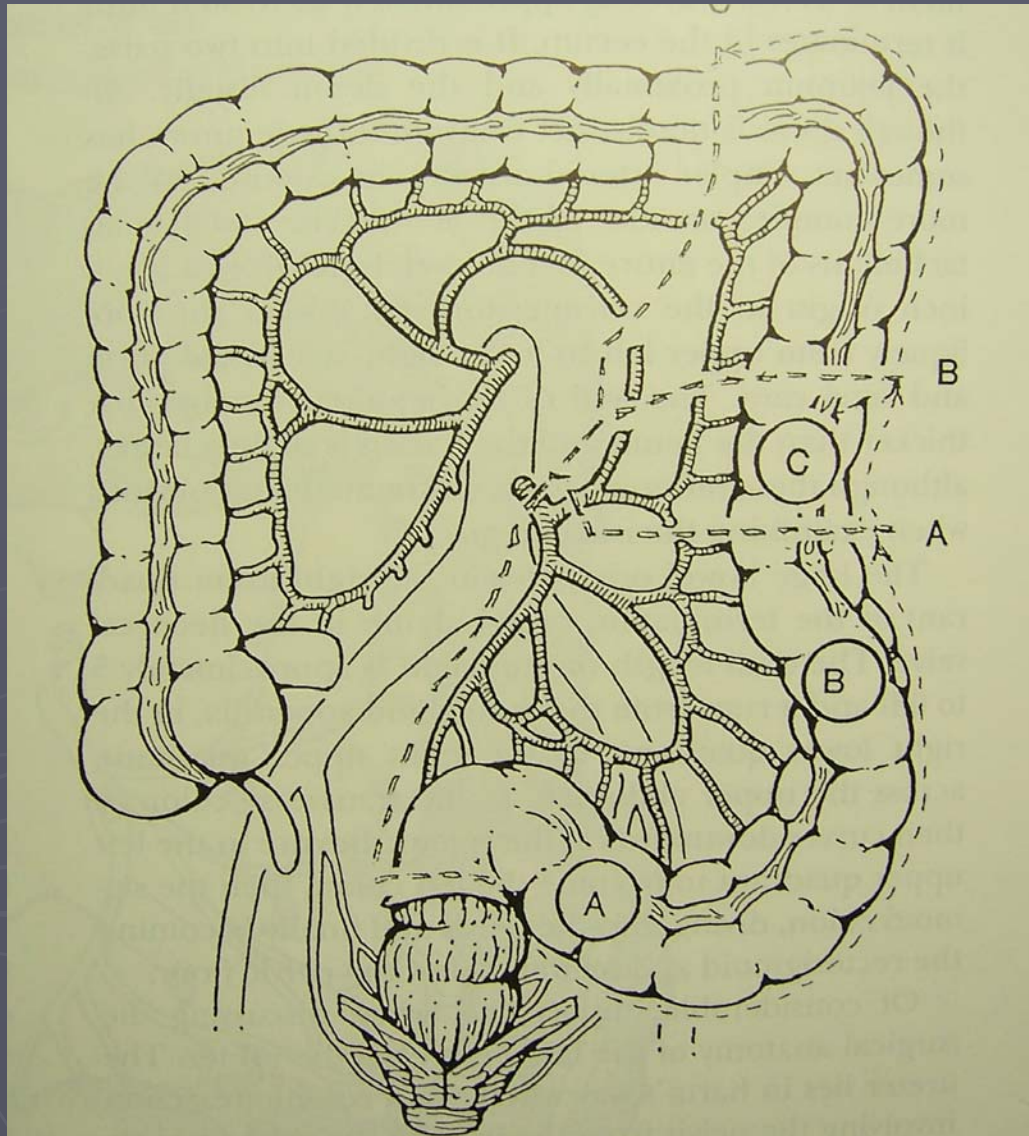
Left Hemicolectomy

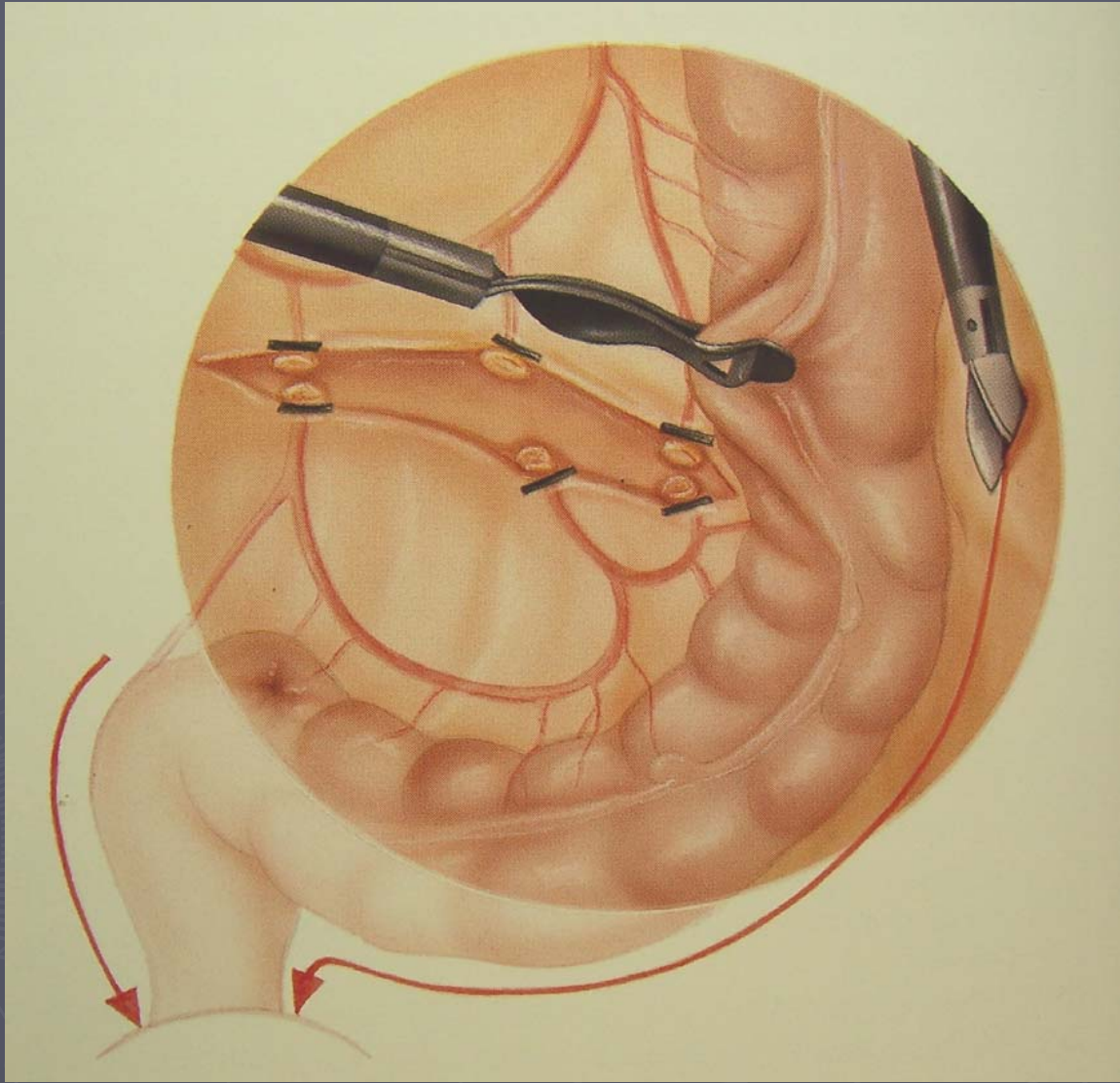
左半結腸切除術

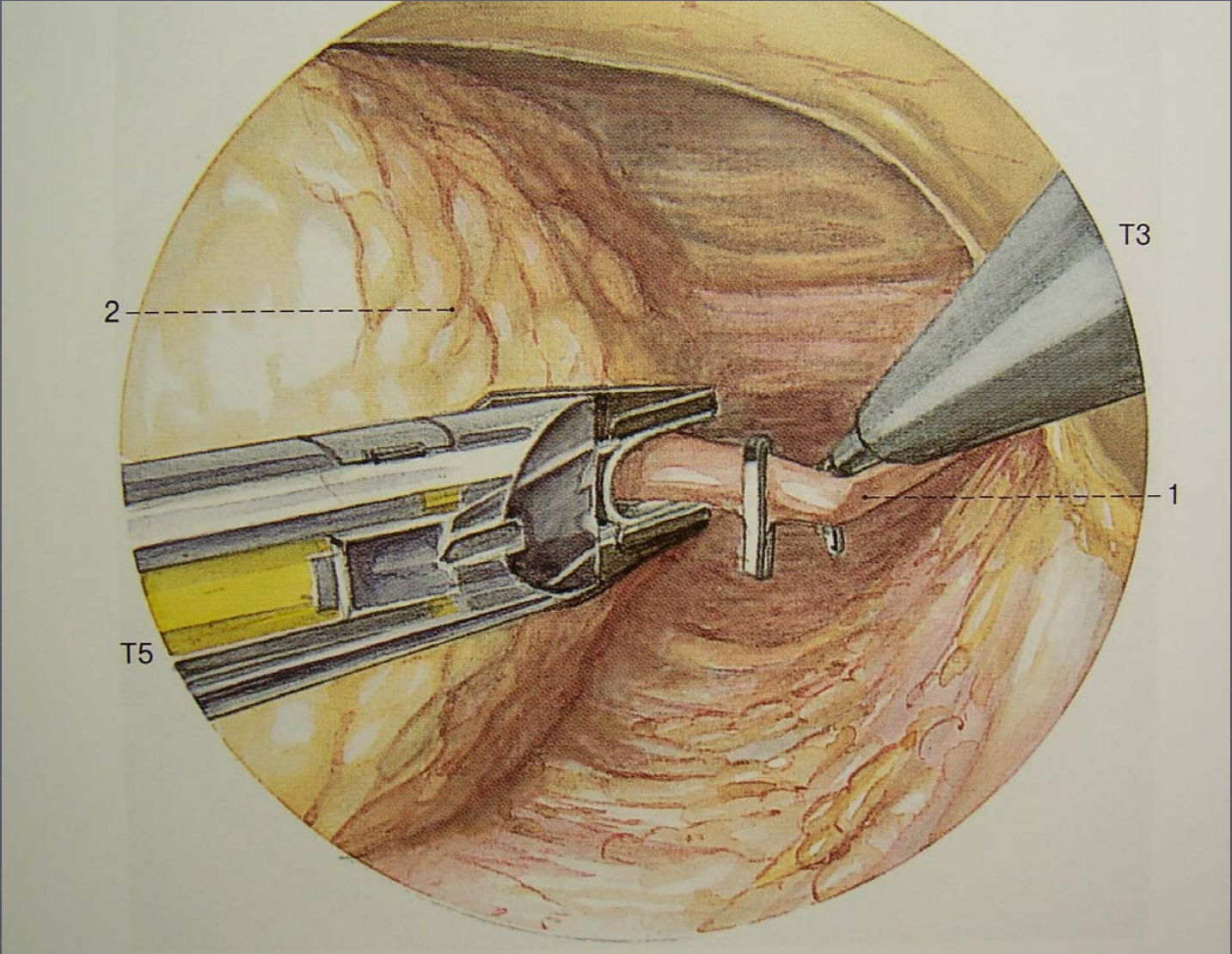


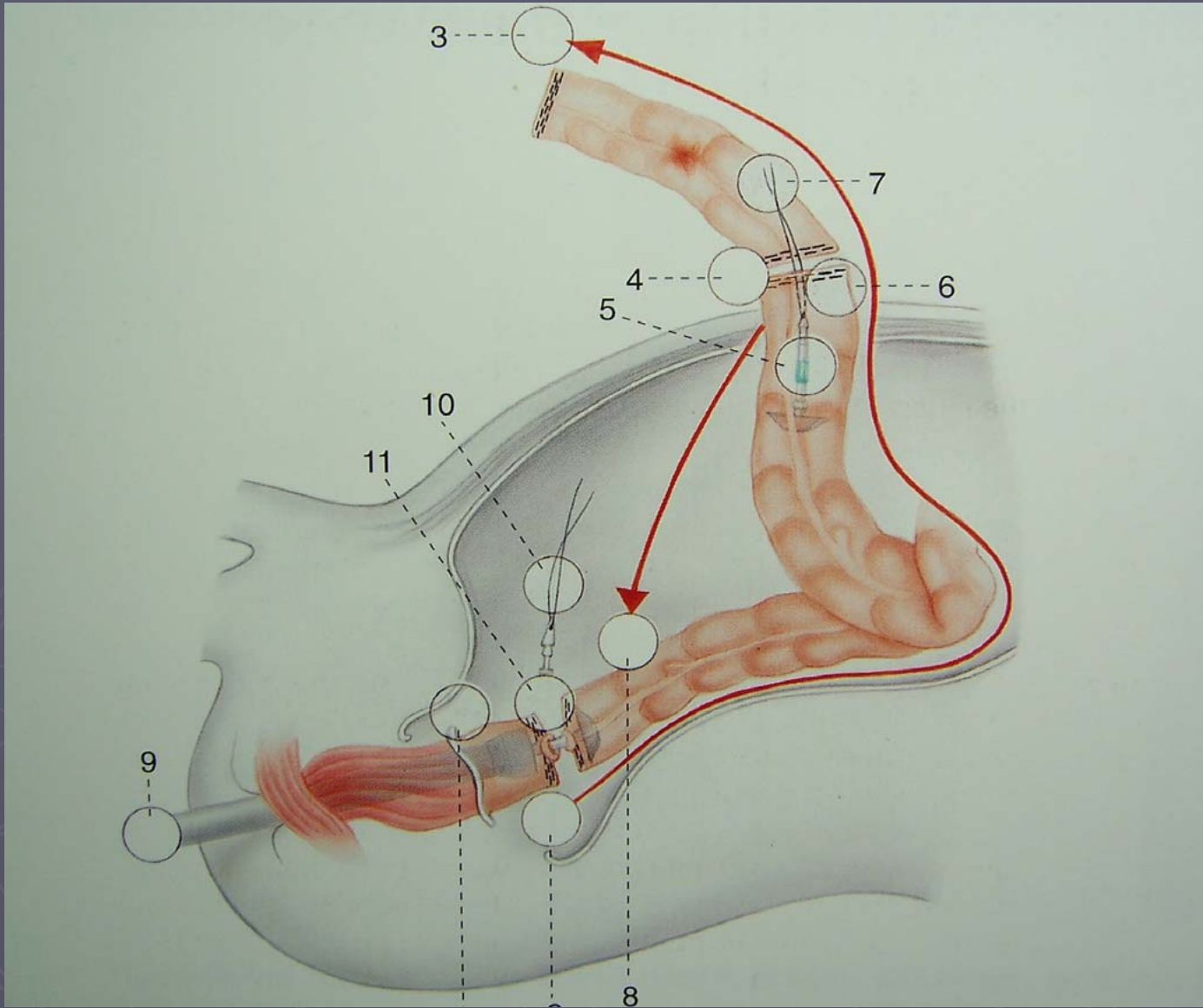
Anterior Resection and Lower Anterior Resection

前位切除及低前位切除
(AR and LAR)



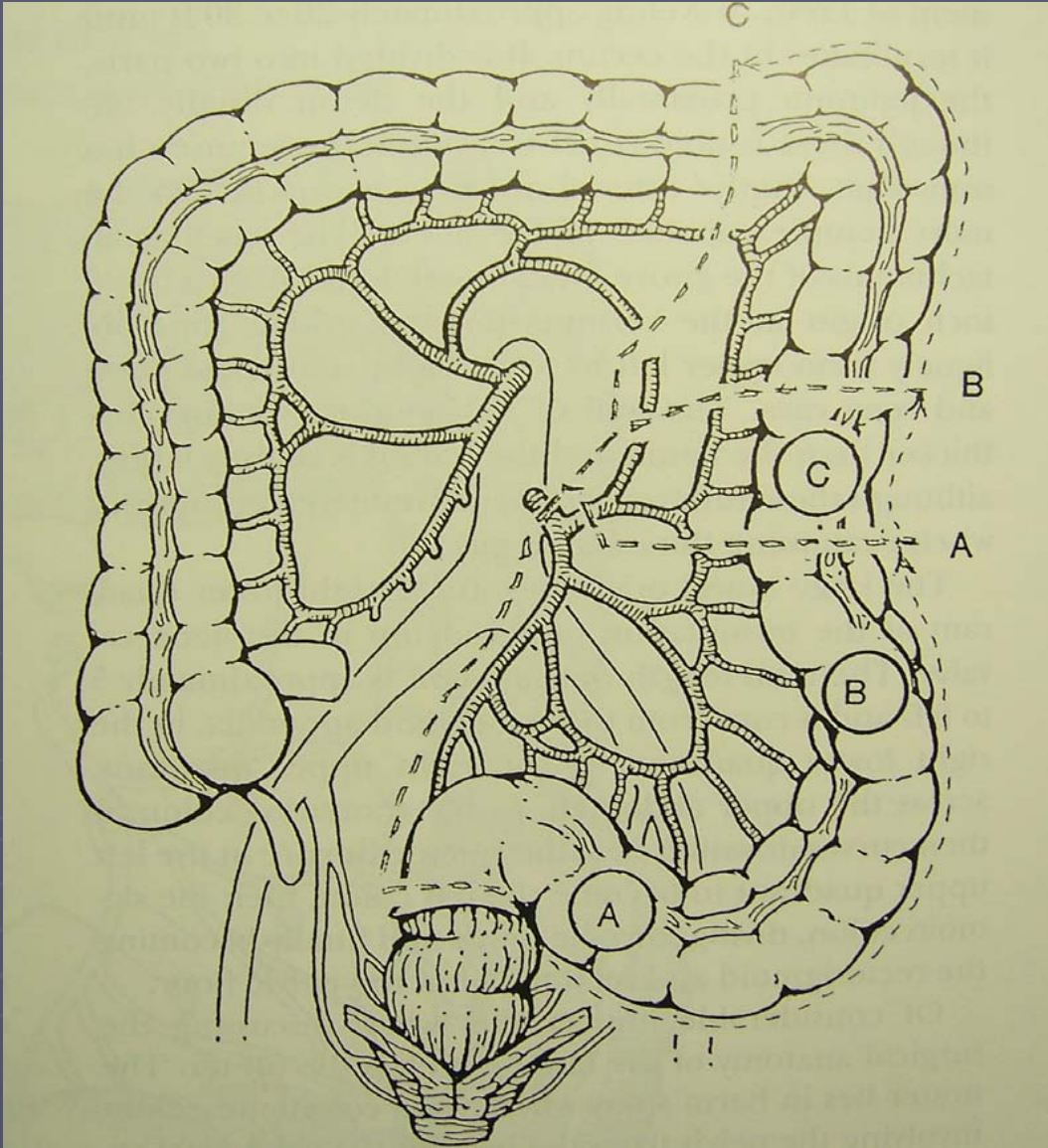


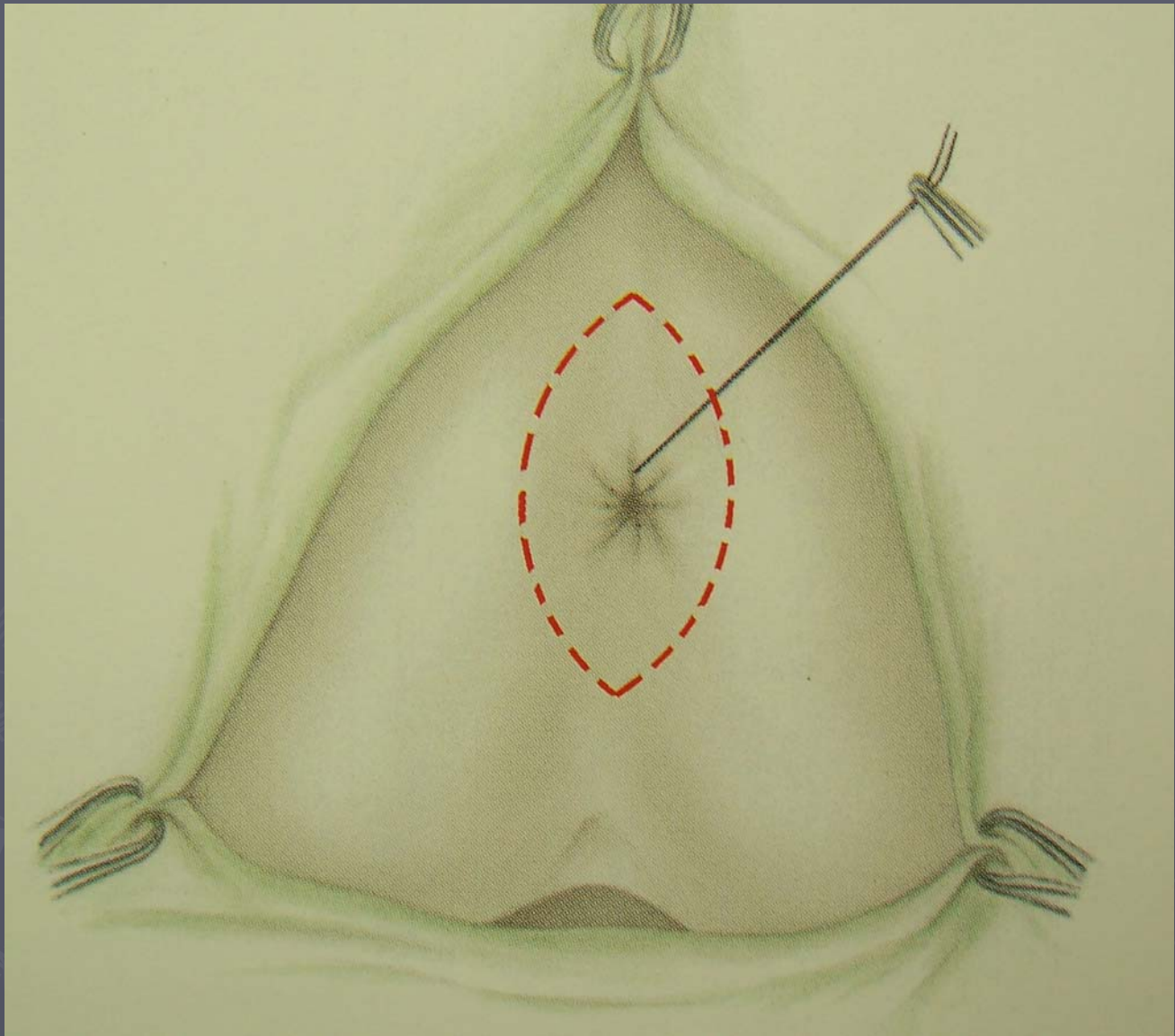


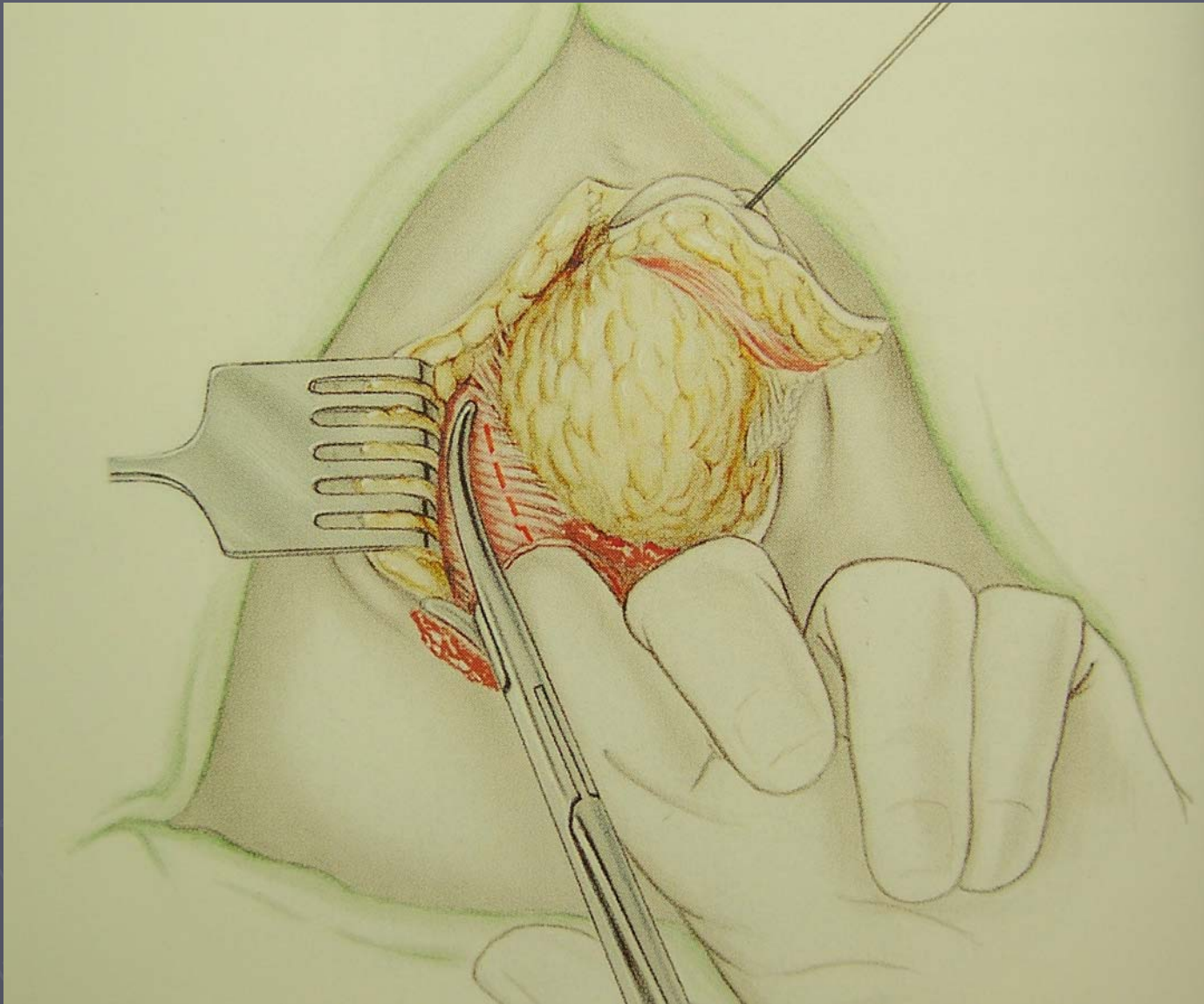


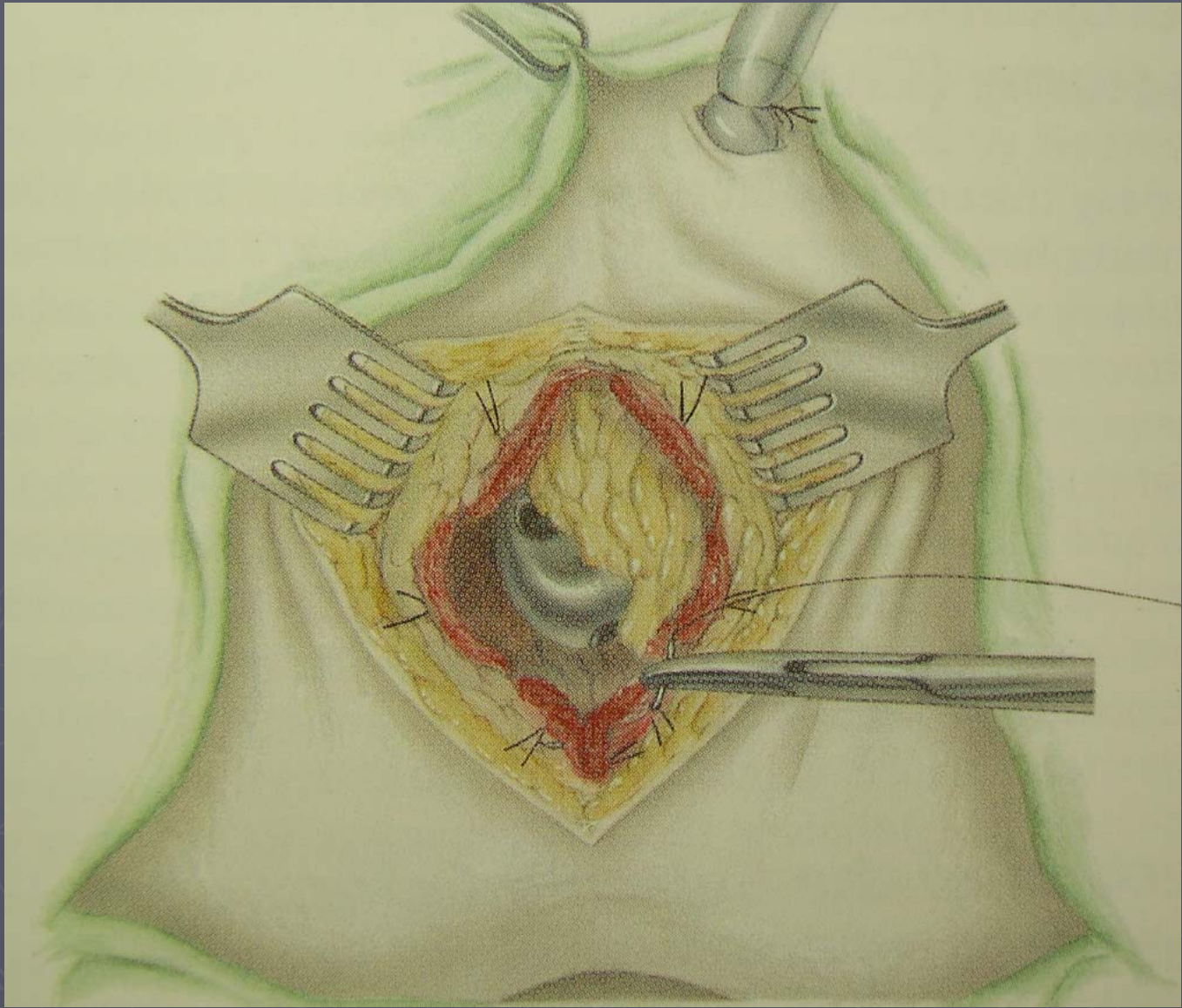
Abdominal-perineal Resection (APR)

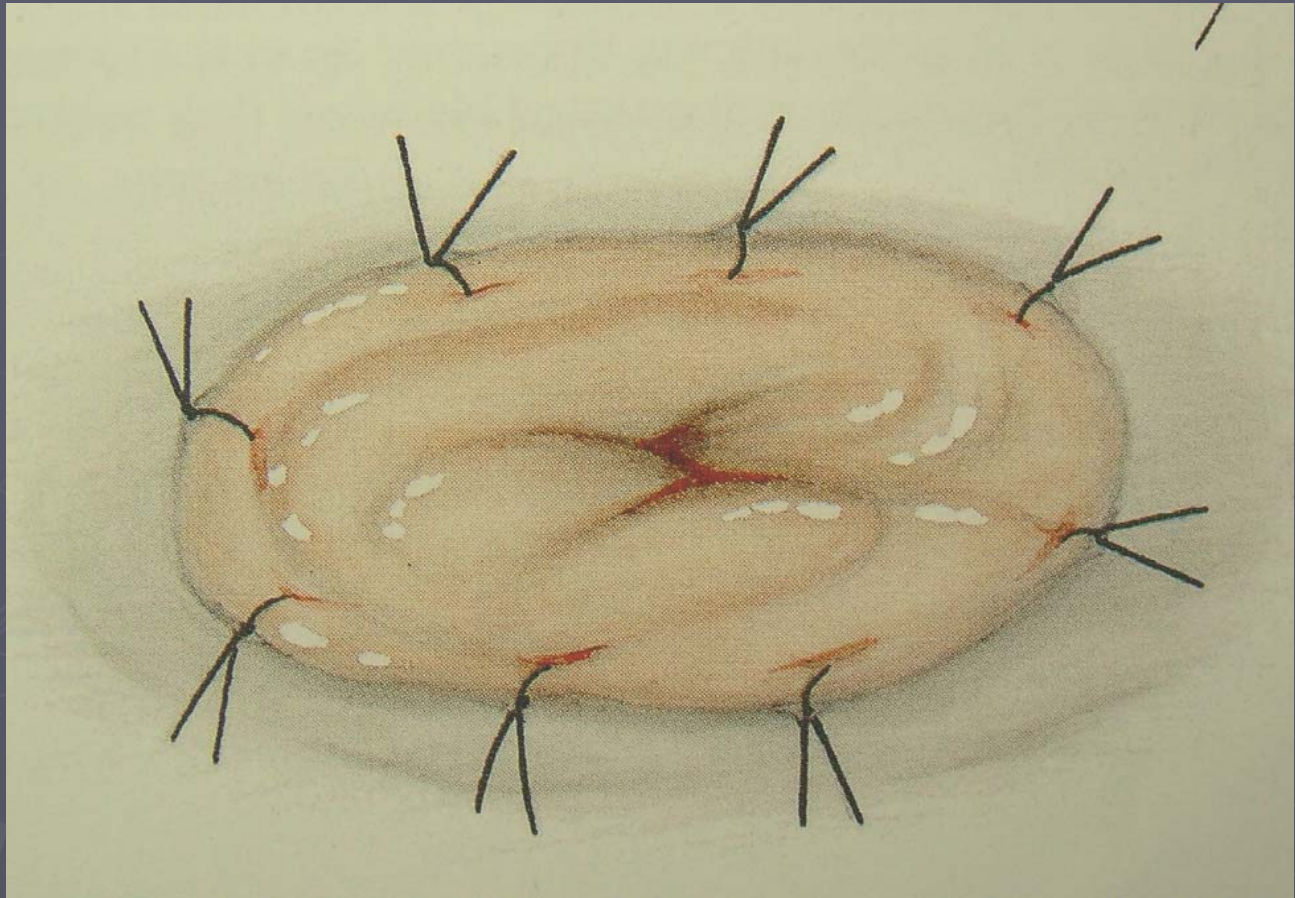
腹部會陰聯合切除術











Hartmann's Procedure



Hartmann's Procedure

- ▶ 切除腸段
- ▶ 遠端關閉
- ▶ 近端做大腸造口
- ▶ 用於無法預先colon prepare的病人

腸造口

Ileostomy

Colostomy的分類

永久

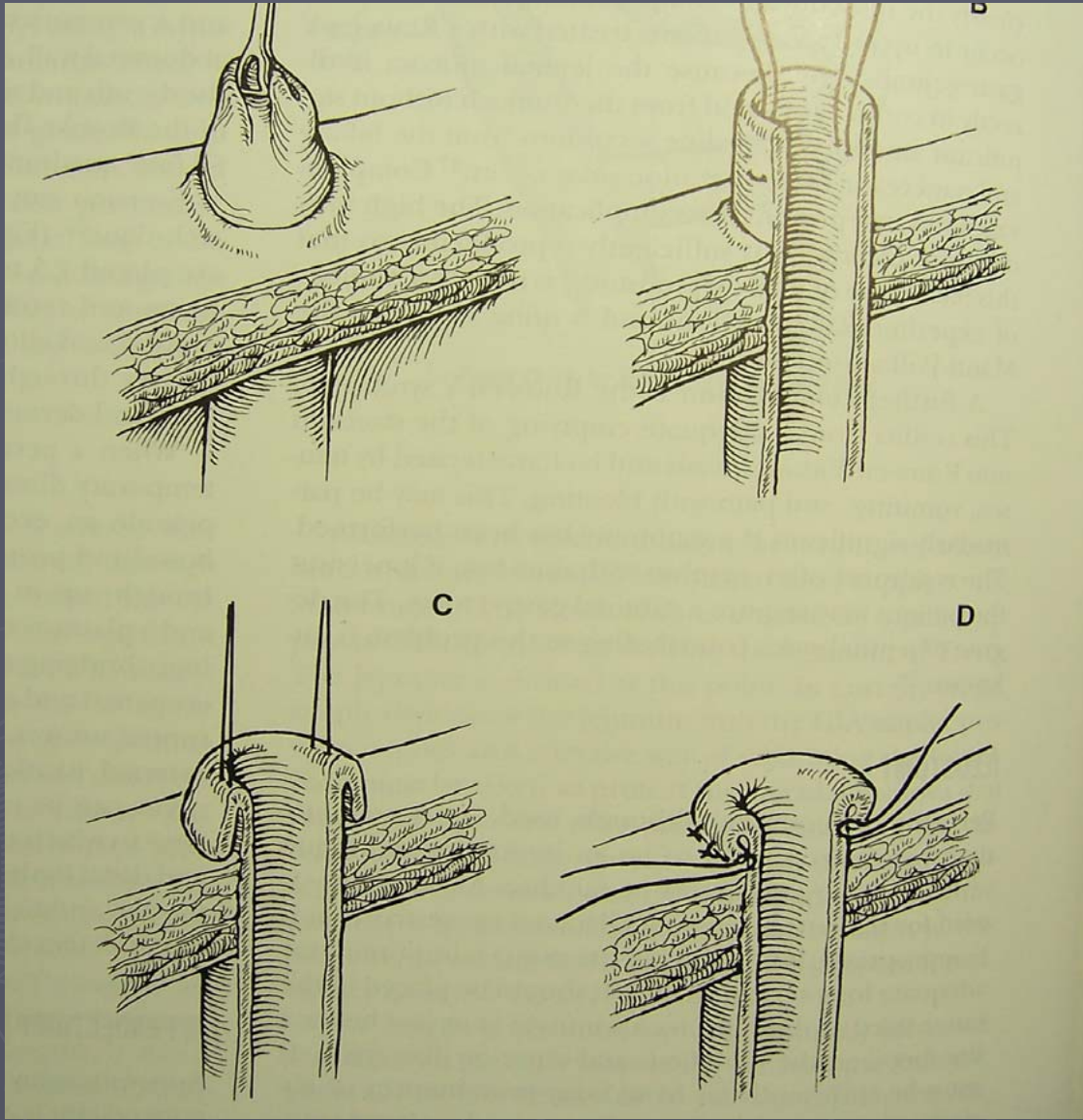
End

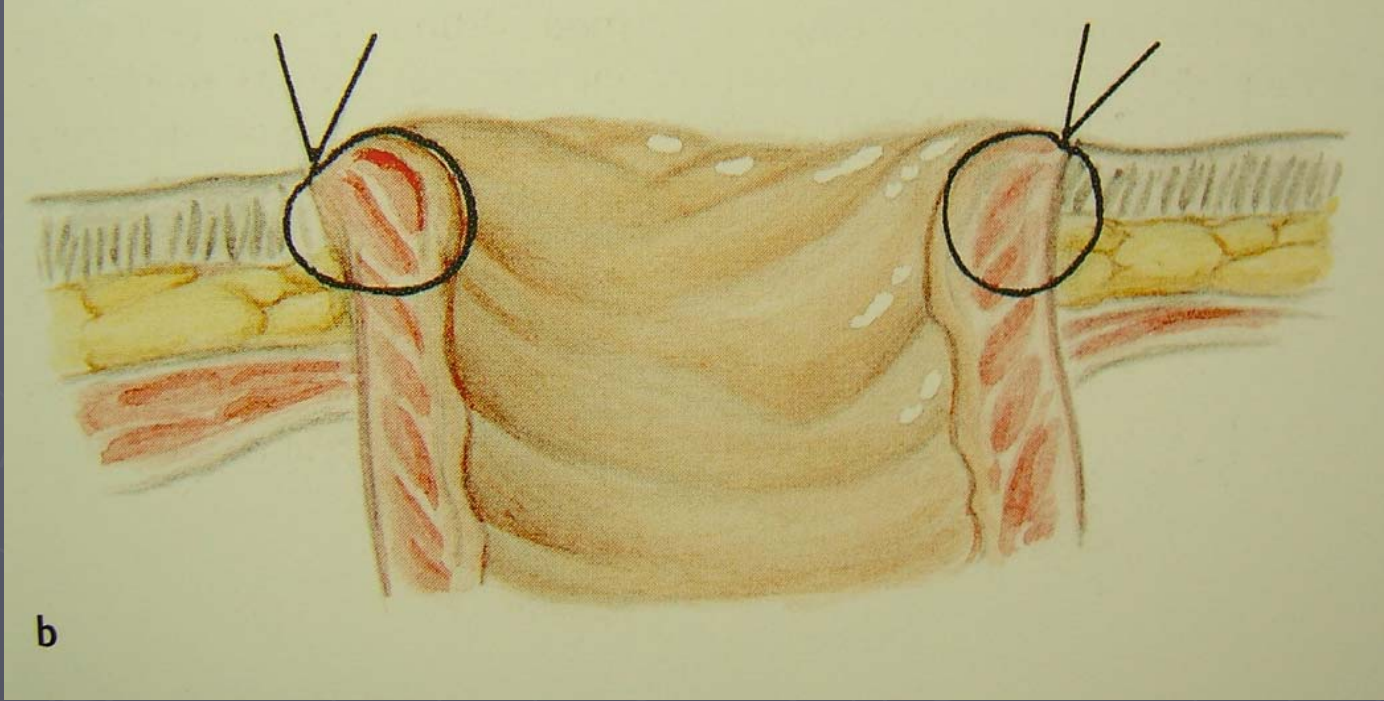
術中打開

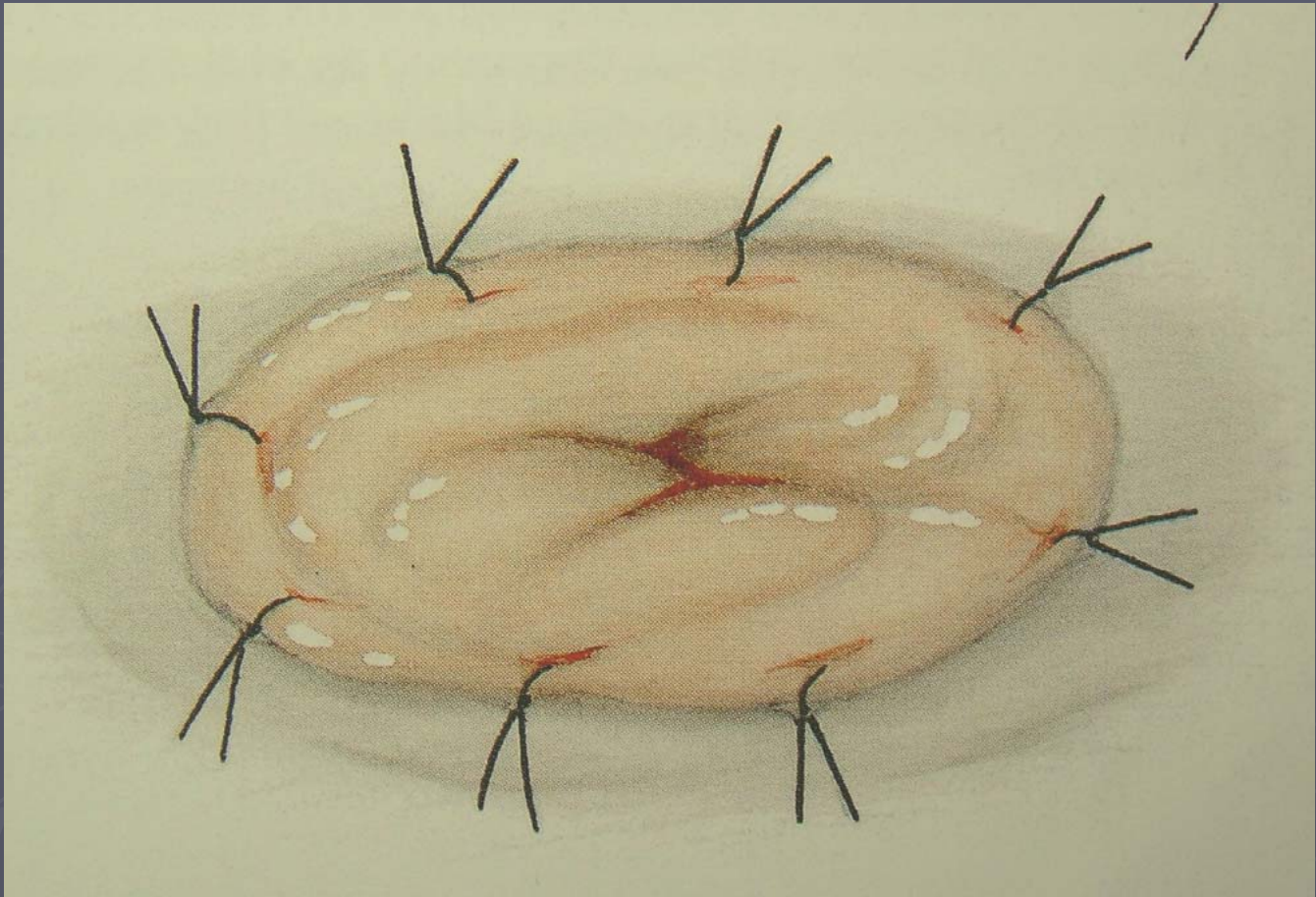
暫時

Loop

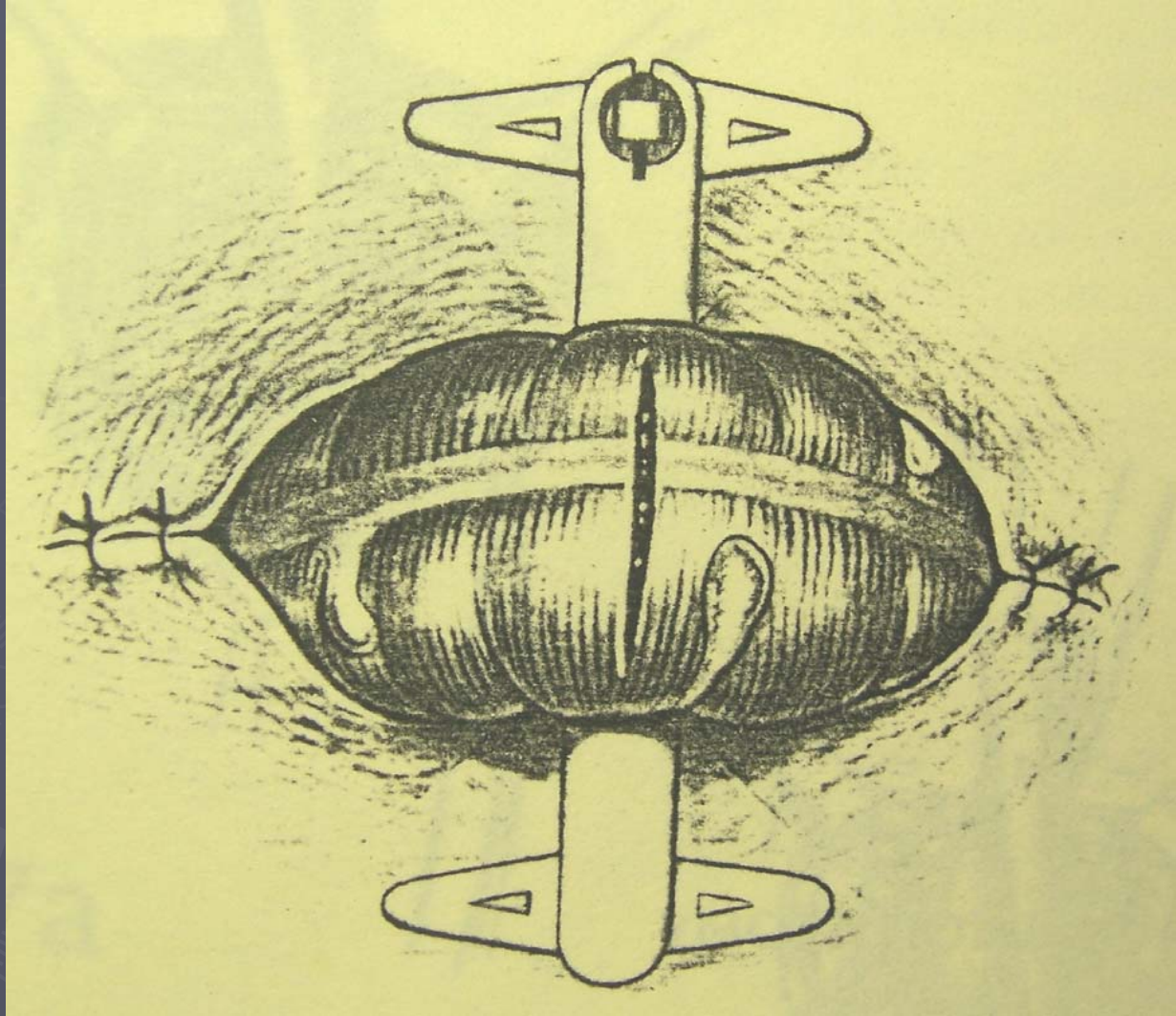
延後打開













大腸直腸手術的併發症

- ▶ Leakage 吻合不良
- ▶ Intra-abdominal abscess 腹內膿瘍
- ▶ Internal bleeding
- ▶ Ureter injury 輸尿管損傷
- ▶ Wound infection
- ▶ Adhesion ileus

感恩

